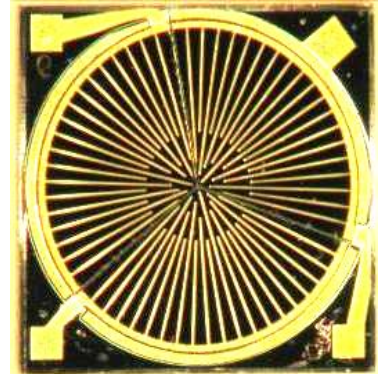


6V GaAs Dual Junction Laser Power Converter

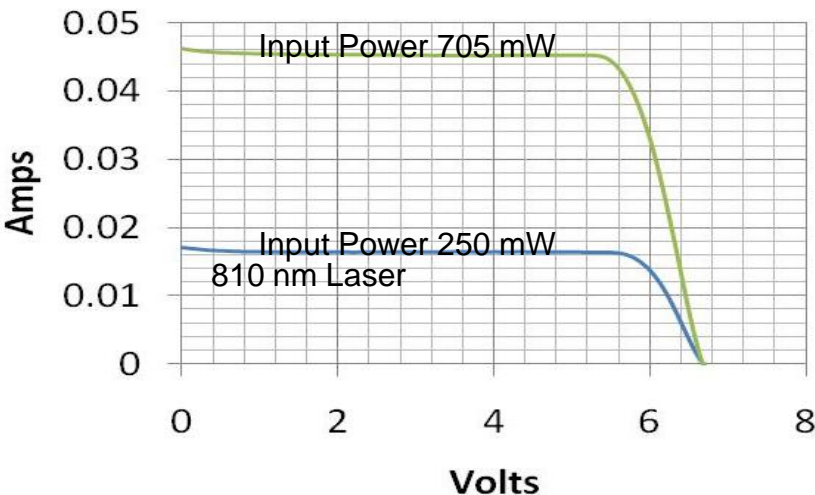
Features

- Monolithic Power-by-Fiber GaAs Power Converter consisting of two cells in series
- 3 mm diameter active area for easy alignment
- Available in die form or packaged in TO packages with FC,ST, and SMA connectors
- Single and multimode fiber compatible
- Nominal 30-35% conversion efficiency over variety of input power levels

6V LPC CHIP



I-V Data versus Input power



6V LPC Package

