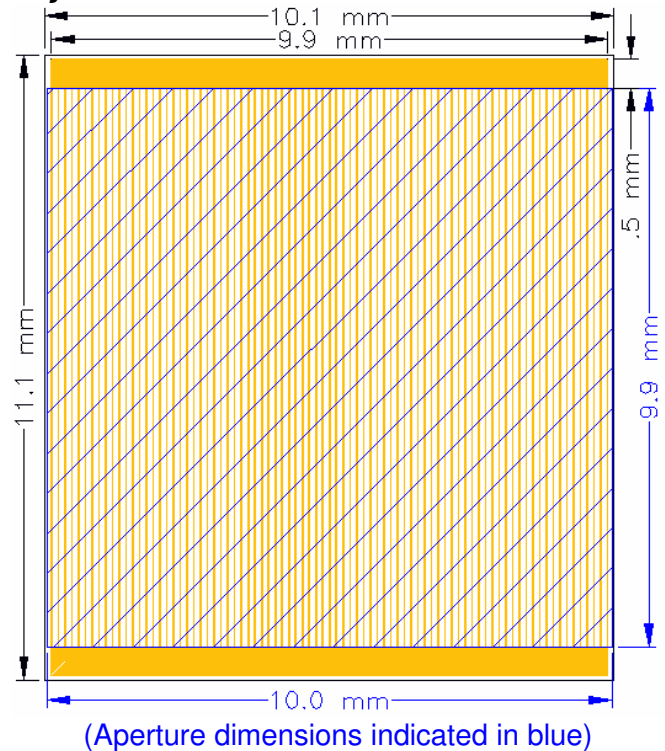


## CDO-100 Concentrator Photovoltaic Cell

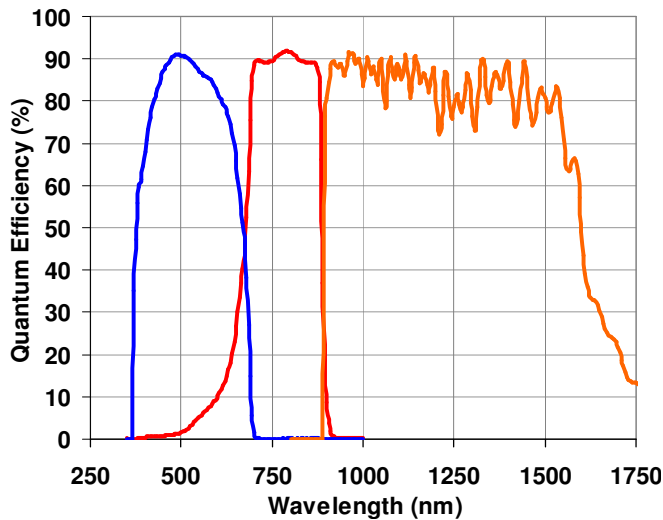
### Product Description

|                             |  |
|-----------------------------|--|
| Substrate:                  | Germanium  |
| Structure:                  | C1MJ   |
|                             | (Concentrator, 1 <sup>st</sup> Generation Multijunction) |
| Aperture Area:              | 98.9 mm <sup>2</sup>                                     |
| Minimum Average Efficiency: | 36%  |
| Operating Temperature:      | <100° C  |
| Maximum Temperature:        | <350° C  |
| Assembly Options:           | Weld   |
|                             | Solder   |
|                             | Wire Bond  |

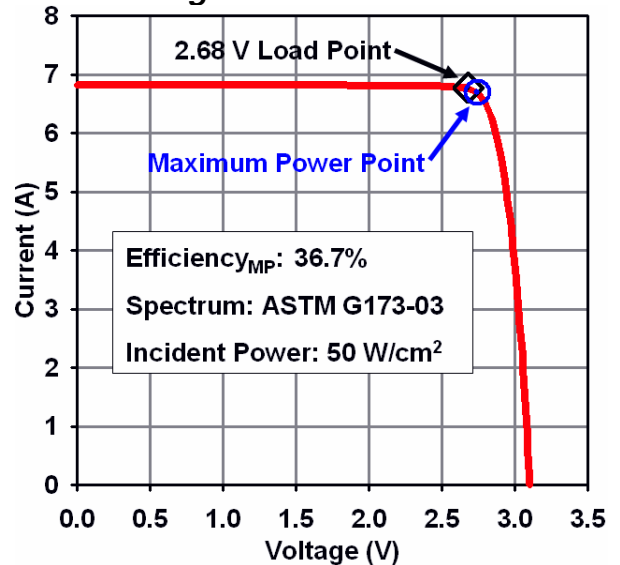
### Layout



### Spectral Response



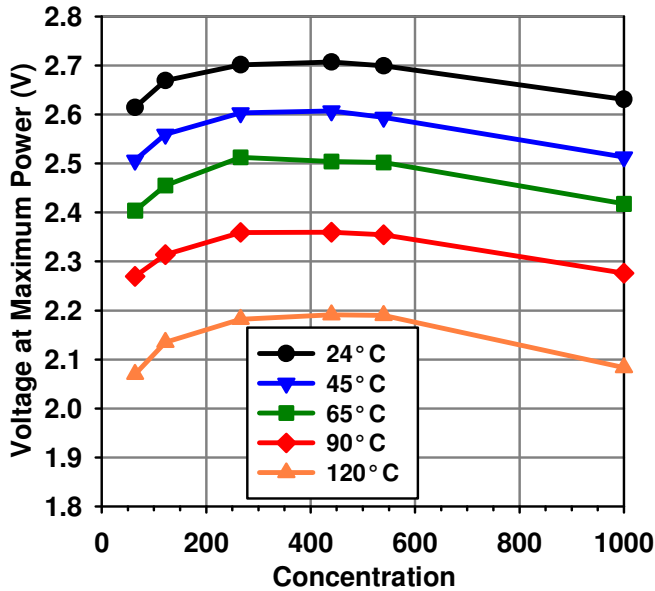
### Current-Voltage Characteristic



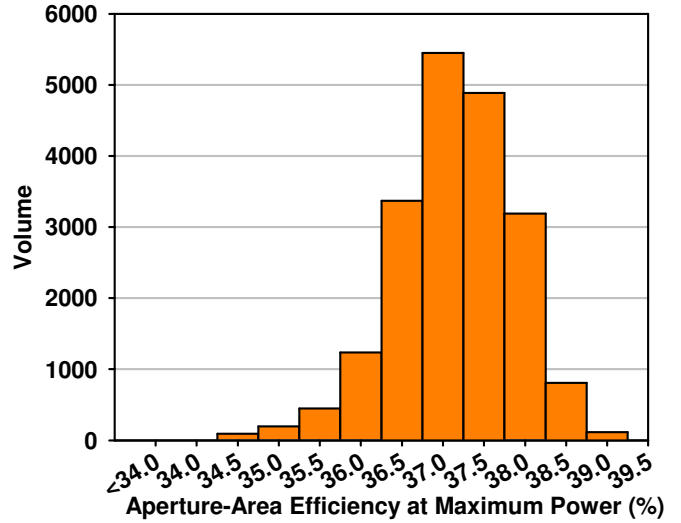
### Current Bins at 2.68 V, 50 W/cm<sup>2</sup>

| Bin | Current (A) |
|-----|-------------|
| 1   | 6.26-6.46   |
| 2   | 6.46-6.66   |
| 3   | 6.66-6.86   |
| 4   | 6.86-7.06   |
| 5   | 7.06-7.26   |

## Performance at Maximum Power



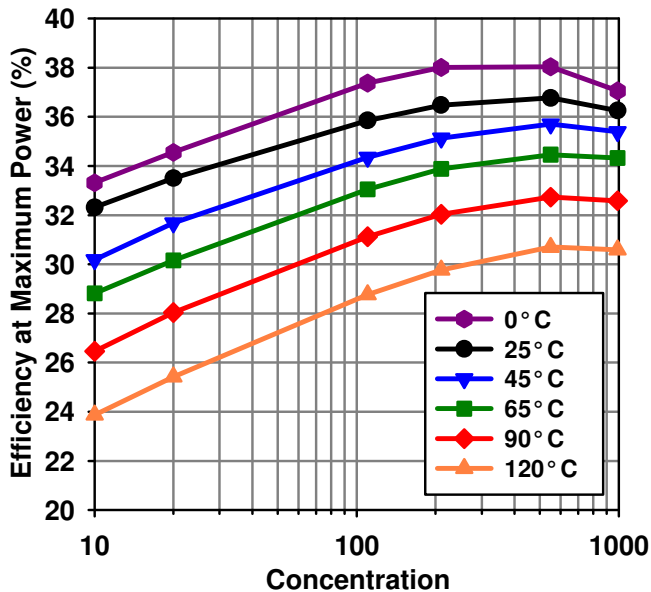
## Efficiency Distribution



## Qualification

Meets IEEE Standard 1513-2001 for:

- Thermal cycling
- Humidity
- Humidity freeze



Updated: 2008-04-24